

# 2020/2021 Course Guide (International Students)



ENGLISH



COMMUNITY  
SERVICES



HEALTH  
SERVICES



PROJECT  
MANAGEMENT



INFORMATION  
TECHNOLOGY



To deliver education by using innovative approaches in a supportive environment, to equip our students with knowledge and practical skills, enabling them to be an active member of the wider community and future leaders in their chosen field.

**SCEDI**  
**SOUTHERN CROSS  
EDUCATION INSTITUTE**

RTO No: 121952 CRICOS Provider: 029340



# CONTENTS

CRICOS CODE	NATIONAL CODE	COURSE TITLE	PAGE NO.	COURSE TYPE
<b>ENGLISH</b>				
086131M		General English - Elementary	6	AT - NON AQF AWARD
086132K		General English - Pre-Intermediate	7	AT - NON AQF AWARD
086133J		General English - Intermediate	8	AT - NON AQF AWARD
086134G		General English - Upper Intermediate	9	AT - NON AQF AWARD
<b>COMMUNITY, EARLY EDUCATION AND SOCIAL SERVICES</b>				
082212J	CHC30113	Certificate III in Early Childhood Education and Care	11	NRT
090551A	CHC33015	Certificate III in Individual Support	12	NRT
090552M	CHC43015	Certificate IV in Ageing Support	13	NRT
090557F	CHC43115	Certificate IV in Disability	14	NRT
082213G	CHC50113	Diploma of Early Childhood Education and Care	15	NRT
090553K	CHC52015	Diploma of Community Services	16	NRT
090595M	CHC62015	Advanced Diploma of Community Sector Management	17	NRT
<b>HEALTH</b>				
090550B	HLT37215	Certificate III in Pathology Collection	19	NRT
090556G	HLT52015	Diploma of Remedial Massage	20	NRT
092297E	HLT54115	Diploma of Nursing	21	NRT
<b>PROJECT / PROGRAM MANAGEMENT</b>				
088817J	BSB51415	Diploma of Project Management	23	NRT
099619B	BSB61218	Advanced Diploma of Program Management	24	NRT
<b>INFORMATION TECHNOLOGY</b>				
0101579	ICT50118	Diploma of Information Technology	26	NRT
086730K	ICT60115	Advanced Diploma of Information Technology	27	NRT

NRT : Nationally Recognised Training

AT Non - AQF Award: Accredited Training non AQF award

# WELCOME

Welcome to Southern Cross Education Institute. Our mission is to provide quality education programs, premium student services and to equip all students with the necessary skills that will enable them to effectively meet and surpass the challenges of the future.

Teaching staff at Southern Cross Education Institute provide students with quality training in accredited and non-accredited courses; both staff and management at SCEI are committed in helping students achieve their chosen qualification. Friendly administration and student support staff, provide students with the best possible environment to ensure that their learning experience is both practical and enjoyable.



Azeezur Rahaman  
(Director)

## WELCOME FROM THE DIRECTOR

Southern Cross Education Institute combines a fun and interactive atmosphere with an energetic and creative method of teaching.

We pride ourselves in providing you, our students, with a high level of customer service, open communication and academic excellence. Our training incorporates a one-on-one individual approach to meet your needs and skill level.

At Southern Cross Education Institute you will experience a relaxed learning environment with fellow students from all parts of the globe.

I wish you the best of luck with your studies and look forward to meeting you.

Warmest Regards  
**Azeezur Rahaman (Director)**

## SCEI Melbourne Campus

SCEI currently has three campuses in Melbourne. The main campus is conveniently located at 155-161 Boundary Road, North Melbourne. The campus has 15 large class rooms (60-80 square metres) and is located centrally within the suburb, providing students with a range of public transport options including bus, tram and train. Students may drive their own car as there is plenty of free street parking available in the area. SCEI encourages students and staff to use bicycles to and from the Institute. Onsite bike securement is available.

All classrooms are fitted with tables and chairs, whiteboard, data projector and WiFi to aid student learning. Students are supplied with training materials that will vary from ebooks to print books or printed handouts in class. Reception is on level one of the building where students can obtain information. There are four computer rooms specifically designed to facilitate independent study and research. Students are invited to relax between classes in either of the two recreational areas, where they have access to a kitchenette. A student library is available to students and staff which is administered by reception.

Melbourne's second multi level campus at 41 Boundary Road, North Melbourne is a five minute walk from the main campus. Free onsite and street parking is available. It comprises ten large classrooms, one computer room, student kitchen and meals area.

Our third Melbourne campus was opened in June 2017. The building is located within 9 minute walk from Flagstaff station, and 2 minute walk from tram stop Route 57. It is located in 52-58 Chetwynd St, West Melbourne, VIC 3003.

## SCEI Adelaide Campus

SCEI Adelaide campus is conveniently located at 14 - 16 Grote Street (entrance off Morialta Street) with access to public transport (bus and tram). The Adelaide campus occupies a 5 level building. Each level is dedicated to specific sector with 3 plus classrooms as well a computer lab for students use. Students are supplied with training materials that will vary from ebooks to textbooks printed handouts in class. Reception is on level two where students can obtain information. On level 5 you will find the student common room where you can relax, converse with other students and have meal breaks. The Welfare Office is situated on level 4





# ENGLISH

086131M	General English - Elementary
086132K	General English - Pre-Intermediate
086133J	General English - Intermediate
086134G	General English - Upper Intermediate



# GENERAL ENGLISH ELEMENTARY

CRICOS Code: 086131M

The aim of the General English Program, which is student-centred and outcome-based, is to equip the students with the skills and knowledge required to perform competently in their further studies and to develop their confidence in communicating in English in an English-speaking country.

The Program is structured in a planned and sequential manner that builds on English levels of individuals throughout each of the program levels. The SCEI General English Program has five program levels:

- Beginner
- Elementary
- Pre-Intermediate
- Intermediate
- Upper Intermediate

Each of the program levels has been designed as a stand-alone program with clear entry and exit points. Students will be assessed upon application to determine their existing English language proficiency. This will determine which program level they will be enrolled in. Upon successful completion of the program level they are enrolled in the student may exit at that point or continue their General English studies by enrolling in the next program level.

## Duration

Full time - 12 weeks

## Pathways

Upon completion of General English – Elementary the student may progress to General English - Pre-Intermediate.

## Mode of Study

On Campus

## Assessment

Assessment is both formative and summative and includes a combination of:

- Weekly mini tests
- Mid program exam
- Final program exam

## Entry Requirements

- Minimum English level of an IELTS test score of 3.5 or equivalent (Level 3 countries only)
- Completion of SCEI English Placement Test with a score between 20 - 39
- 18 years of age or a successful completion of GE Beginner level course

## Please Note

- All new students MUST complete the SCEI English Placement Test
- Entry into the course is determined by the student's score of the English Placement Test

## Campus Available

Melbourne



## Topics Covered

- People
- Possessions
- Places
- Free Time
- Food
- Money
- Journeys
- Appearance
- Films & The Arts
- Science
- Tourism
- The Earth



# GENERAL ENGLISH PRE-INTERMEDIATE

CRICOS Code: 086132K

The aim of the General English Program, which is student-centred and outcome-based, is to equip the students with the skills and knowledge required to perform competently in their further studies and to develop their confidence in communicating in English in an English-speaking country.

The Program is structured in a planned and sequential manner that builds on English levels of individuals throughout each of the program levels. The SCEI General English Program has five program levels:

- Beginner
- Elementary
- Pre-Intermediate
- Intermediate
- Upper Intermediate

Each of the program levels has been designed as a stand-alone program with clear entry and exit points. Students will be assessed upon application to determine their existing English language proficiency. This will determine which program level they will be enrolled in. Upon successful completion of the program level they are enrolled in the student may exit at that point or continue their General English studies by enrolling in the next program level.

## Duration

Full time - 12 weeks

## Pathways

Upon completion of General English - Pre-Intermediate the student may progress to General English - Intermediate.

## Mode of Study

On Campus

## Assessment

Assessment is both formative and summative and includes a combination of:

- Weekly mini tests
- Mid program exam
- Final program exam

## Entry Requirements

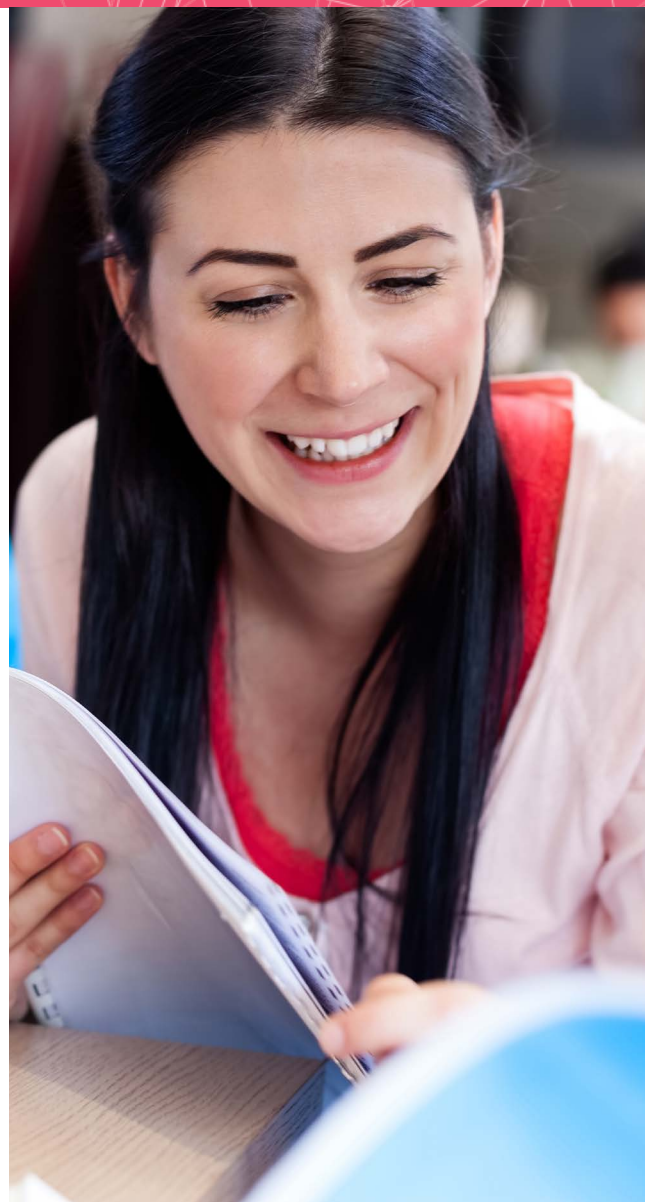
- Minimum English level of IELTS 4.0 or equivalent (Level 3 countries only)
- Completion of SCEI English Placement Test with a score between 40 – 59
- 18 years of age or a successful completion of GE Elementary level course

## Please Note

- All new students MUST complete the SCEI English Placement Test
- Entry into the course is determined by the student's score of the English Placement Test

## Campus Available

Melbourne



## Topics Covered

- Health
- Competitions
- Transport
- Adventure
- Environment
- Stages in Life
- Work
- Technology
- Language & Learning
- Travel & Holidays
- History
- Nature

# GENERAL ENGLISH INTERMEDIATE

CRICOS Code: 086133J

The aim of the General English Program, which is student-centred and outcome-based, is to equip the students with the skills and knowledge required to perform competently in their further studies and to develop their confidence in communicating in English in an English-speaking country.

The Program is structured in a planned and sequential manner that builds on English levels of individuals throughout each of the program levels. The SCEI General English Program has five program levels:

- Beginner
- Elementary
- Pre-Intermediate
- Intermediate
- Upper Intermediate

Each of the program levels has been designed as a stand-alone program with clear entry and exit points. Students will be assessed upon application to determine their existing English language proficiency. This will determine which program level they will be enrolled in. Upon successful completion of the program level they are enrolled in the student may exit at that point or continue their General English studies by enrolling in the next program level.

## Duration

Full time - 12 weeks

## Pathways

Upon completion of General English - Intermediate the student may progress to General English - Upper Intermediate.

## Mode of Study

On Campus

## Assessment

Assessment is both formative and summative and includes a combination of:

- Weekly mini tests
- Mid program exam
- Final program exam

## Entry Requirements

- Minimum English level of IELTS 4.5 or equivalent (Level 3 countries only)
- Completion of SCEI English Placement Test with a score between 60 – 79
- 18 years of age or a successful completion of GE Pre-intermediate level course

## Please Note

- All new students MUST complete the SCEI English Placement Test
- Entry into the course is determined by the student's score of the English Placement Test

## Campus Available

Melbourne



## Topics Covered

- Colour
- Performance
- Water
- Opportunities
- Travel
- Wellbeing
- Living Space
- Weird News
- Trade
- No Limits
- Connections
- Experts



# GENERAL ENGLISH UPPER INTERMEDIATE

CRICOS Code: 086134G

The aim of the General English Program, which is student-centred and outcome-based, is to equip the students with the skills and knowledge required to perform competently in their further studies and to develop their confidence in communicating in English in an English-speaking country.

The Program is structured in a planned and sequential manner that builds on English levels of individuals throughout each of the program levels. The SCEI General English Program has five program levels:

- Beginner
- Elementary
- Pre-Intermediate
- Intermediate
- Upper Intermediate

Each of the program levels has been designed as a stand-alone program with clear entry and exit points. Students will be assessed upon application to determine their existing English language proficiency. This will determine which program level they will be enrolled in. Upon successful completion of the program level they are enrolled in the student may exit at that point or continue their General English studies by enrolling in the next program level.

## Duration

Full time - 12 weeks

## Pathways

Upon completion of General English - Upper Intermediate the student may progress to a Nationally Recognised Training course at Certificate III or Certificate IV level.

## Mode of Study

On Campus

## Assessment

Assessment is both formative and summative and includes a combination of:

- Weekly mini tests
- Mid program exam
- Final program exam

## Entry Requirements

- Minimum English level of IELTS 5.0 or equivalent (Level 3 countries only)
- Completion of SCEI English Placement Test with a score between 80 – 100
- 18 years of age or a successful completion of GE Intermediate level course

## Please Note

- All students MUST complete the SCEI English Placement Test
- Entry into the course is determined by the student's score of the English Placement Test

## Campus Available

Melbourne



## Topics Covered

- Relationships
- Storytelling
- Science & Technology
- Art & Creativity
- Development
- Alternative Travel
- Natural Resources
- The News
- Talented People
- Customs & Behaviour
- Knowledge & Learning
- The Economy



# COMMUNITY, EARLY EDUCATION AND SOCIAL SERVICES

082212J	CHC30113	Certificate III in Early Childhood Education and Care
090551A	CHC33015	Certificate III in Individual Support
090552M	CHC43015	Certificate IV in Ageing Support
090557F	CHC43115	Certificate IV in Disability
082213G	CHC50113	Diploma of Early Childhood Education and Care
090553K	CHC52015	Diploma of Community Services
090595M	CHC62015	Advanced Diploma of Community Sector Management





# CHC30113 CERTIFICATE III IN EARLY CHILDHOOD EDUCATION AND CARE

CRICOS Code: 082212J



This qualification reflects the role of workers in a range of early childhood education settings who work within the requirements of the Education and Care Services National Regulations and the National Quality Standard. They support the implementation of an approved learning framework, and support children's wellbeing, learning and development. Depending on the setting, educators may work under direct supervision or autonomously.

## Duration

Full time - 46 weeks

## Work Placement Hours

160 Hours

## Mode of Study

On Campus

## Further Study Pathways

After achieving this Certificate III qualification, individuals may continue their studies in CHC50113 Diploma of Early Childhood Education and Care.

## Employment Opportunities

This course may provide employment opportunities in centre-based care, occasional care, out of school hour's care and family day care.

Job roles include:

- Early childhood educator
- Playgroup supervisor
- Family day care worker
- Nanny
- Childhood education assistant

## Assessment

Assessment is both formative and summative and may include a combination of questioning, projects, case scenarios, research, observation in the workplace.

## Entry Requirements

- Successful completion of Year 11 or the equivalent level of study
- Minimum English level of IELTS 5.5 or equivalent. Candidates originating from student visa assessment levels 1 and 2 without the required IELTS score can undertake Language, Literacy and Numeracy Indicator Test. For information on student visa assessment levels, refer to Department of Home Affairs (<https://www.homeaffairs.gov.au/>)
- Applicants must also be aged 18 or above

## Additional Requirements

- National Police Record Check and/or Police clearance from country of residence (home country)
- Working with Children Check
- Moderate level of computer literacy required

## Campus Available

Melbourne



## Units of Competency

CHCLEG001	Work legally and ethically
CHCECE001	Develop cultural competence
CHCECE002	Ensure the health and safety of children
CHCECE003	Provide care for children
CHCECE004	Promote and provide healthy food and drinks
CHCECE005	Provide care for babies and toddlers
CHCECE007	Develop positive and respectful relationships with children
CHCECE009	Use an approved learning framework to guide practice
CHCECE010	Support the holistic development of children in early childhood
CHCECE011	Provide experiences to support children's play and learning
CHCECE013	Use information about children to inform practice
CHCPRT001	Identify and respond to children and young people at risk

HLTAID004	Provide an emergency first aid response in an education and care setting
HLTWHS001	Participate in workplace health and safety
CHCDIV002	Promote Aboriginal and/or Torres Strait Islander cultural safety
CHCECE021	Implement strategies for the inclusion of all children
CHCDIV001	Work with diverse people
CHCECE006	Support behaviour of children and young people

# CHC33015 CERTIFICATE III IN INDIVIDUAL SUPPORT

CRICOS Code: 090551A



This qualification reflects the role of workers in the community and/or residential setting who follow an individualised plan to provide person-centred support to people who may require support due to ageing, disability or some other reason. Work involves using discretion and judgement in relation to individual support as well as taking responsibility for own outputs. Workers have a range of factual, technical and procedural knowledge, as well as some theoretical knowledge of the concepts and practices required to provide person-centred support.

## Duration

Full time - 44 weeks

## Work Placement Hours

160 Hours

## Mode of Study

On Campus

## Further Study Pathways

Completion of CHC33015 Certificate III in Individual Support, students may continue their studies by enrolling in the following course at a:

- CHC43015 Certificate IV in Ageing Support
- CHC43115 Certificate IV in Disability
- HLT54115 Diploma of Nursing

## Employment Opportunities

The following employment opportunities are available to students who complete this qualification:

- Aged care worker

## Assessment

Assessment is both formative and summative and may include a combination of questioning, projects, case scenarios, research, observation in the workplace.

## Entry Requirements

To ensure an appropriate learning opportunity, candidates need to demonstrate a capacity to undertake study at Certificate III level, this can be demonstrated via the following:

- Successful completion of Year 11 or the equivalent level of study
- Minimum English level of IELTS 5.5 or equivalent. Candidates originating from student visa assessment levels 1 and 2 without the required IELTS score can undertake Language, Literacy and Numeracy Indicator Test. For information on student visa assessment levels, refer to Department of Home Affairs (<https://www.homeaffairs.gov.au/>)
- Applicants must be aged 18 or above

## Additional Requirements

- National Police Record Check and/or Police clearance from country of residence (home country)
- Aged care sector screening clearance
- Moderate level of computer literacy required

## Campus Available

Melbourne



## Units of Competency

CHCCCS015	Provide individualised support
CHCCCS023	Support independence and well being
CHCCOM005	Communicate and work in health or community services
CHCDIV001	Work with diverse people
CHCLEG001	Work legally and ethically
HLTAAP001	Recognise healthy body systems
HLTWHS002	Follow safe work practices for direct client care
CHCAGE002	Implement falls prevention strategies
HLTAID003	Provide First Aid
CHCAGE001	Facilitate the empowerment of older people
CHCAGE005	Provide support to people living with dementia
CHCCCS011	Meet personal support needs
CHCCCS025	Support relationships with carers and families



# CHC43015 CERTIFICATE IV IN AGEING SUPPORT

CRICOS Code: 090552M



This qualification reflects the role of support workers who complete specialised tasks and functions in aged services; either in residential, home or community based environments. Workers will take responsibility for their own outputs within defined organisation guidelines and maintain quality service delivery through the development, facilitation and review of individualised service planning and delivery.

## Duration

Full time - 60 weeks

## Work Placement Hours

160 Hours

## Mode of Study

On Campus

## Further Study Pathways

After achieving CHC43015 Certificate IV in Ageing Support, students may continue their studies by enrolling in the following course:

- HLT54115 Diploma of Nursing

## Employment Opportunities

The following employment opportunities are available to students who complete this qualification:

- Aged Care Activity Worker
- Care Service Team Leader
- Care Supervisor (Aged Care)

## Assessment

Assessment is both formative and summative and may include a combination of Questioning, Skills Assessment, Industry Work Placement, Scenario, Case Study, Project and Research.

## Entry Requirements

To ensure an appropriate learning opportunity, candidates need to demonstrate a capacity to undertake study at Certificate IV level, this can be demonstrated via the following:

- Successful completion of Year 11 or the equivalent level of study
- Minimum English level of IELTS 5.5 or equivalent. Candidates originating from student visa assessment levels 1 and 2 without the required IELTS score can undertake Language, Literacy and Numeracy Indicator Test. For information on student visa assessment levels, refer to Department of Home Affairs (<https://www.homeaffairs.gov.au/>)
- Applicants must also be aged 18 or above

## Additional Requirements

- National Police Record Check and/or Police clearance from country of residence (home country)
- Aged care sector screening clearance
- Moderate level of computer literacy required

## Campus Available

Melbourne, Adelaide



## Units of Competency

CHCADV001	Facilitate the interests and rights of clients
CHCAGE001	Facilitate the empowerment of older people
CHCAGE003	Coordinate services for older people
CHCAGE004	Implement interventions with older people at risk
CHCAGE005	Provide support to people living with dementia
CHCCS006	Facilitate individual service planning and delivery
CHCCS011	Meet personal support needs
CHCCS023	Support independence and wellbeing
CHCCS025	Support relationships with carers and families
CHCDIV001	Work with diverse people
CHCLEG003	Manage legal and ethical compliance
CHCPAL001	Deliver care services using a palliative approach
CHCPRP001	Develop and maintain networks and collaborative partnerships

HLTAAP001	Recognise healthy body systems
HLTWHS002	Follow safe work practices for direct client care
HLTAID003	Provide First Aid
CHCAGE002	Implement falls prevention strategies
CHCCOM005	Communicate and work in health or community services

# CHC43115 CERTIFICATE IV IN DISABILITY

CRICOS Code: 090557F



This qualification reflects the role of workers in a range of community settings and clients' homes, who provide training and support in a manner that empowers people with disabilities to achieve greater levels of independence, selfreliance, community participation and wellbeing. Workers promote a person-centred approach, work without direct supervision and may be required to supervise and/or coordinate a small team.

## Duration

Full time - 56 weeks

## Work Placement Hours

160 Hours

## Mode of Study

On Campus

## Further Study Pathways

After achieving this Certificate IV qualification, individuals may continue their studies in HLT54115 Diploma of Nursing

## Employment Opportunities

This course may provide you with employment opportunities in residential or community settings with people with disabilities in a direct care role.

Job roles may include:

- Disability officer - day support
- Disability support officer / worker
- Senior personal care assistant

## Assessment

Assessment is both formative and summative and may include a combination of questioning, case scenarios, projects, skills assessment and observation in the workplace.

## Entry Requirements

To ensure an appropriate learning opportunity, candidates need to demonstrate a capacity to undertake study at Certificate IV level, this can be demonstrated via the following:

- Successful completion of Year 11 or above.
- Minimum English level of IELTS 5.5 or equivalent. Candidates originating from student visa assessment levels 1 and 2 without the required IELTS score can undertake Language, Literacy and Numeracy Indicator Test. For information on student visa assessment levels, refer to Department of Home Affairs (<https://www.homeaffairs.gov.au/>)
- Applicants must also be aged 18 or above

## Additional Requirements

- National Police Record Check and/or Police clearance from country of residence (home country)
- Disability services / vulnerably people related screening
- Moderate level of computer literacy required

## Campus Available

Melbourne, Adelaide



## Units of Competency

CHCCCS015	Provide individualised support
CHCDIS002	Follow established person-centred behaviour supports
CHCDIS005	Develop and provide person-centred service responses
CHCDIS007	Facilitate the empowerment of people with disability
CHCDIS008	Facilitate community participation and social inclusion
CHCDIS009	Facilitate ongoing skills development using a person-centred approach
CHCDIS010	Provide person-centred services to people with disability with complex needs
CHCDIV001	Work with diverse people
CHCLEG003	Manage legal and ethical compliance
HLTAAP001	Recognise healthy body systems
HLTWHS002	Follow safe work practices for direct client care

HLTAID003	Provide first aid
CHCCCS006	Facilitate individual service planning and delivery
CHCDIS004	Communicate using augmentative and alternative communication strategies



# CHC50113 DIPLOMA OF EARLY CHILDHOOD EDUCATION AND CARE

CRICOS Code: 082213G



This qualification reflects the role of early childhood educators who are responsible for designing and implementing curriculum in early childhood education and care services. In doing so they work to implement an approved learning framework within the requirements of the Education and Care Services National Regulations and the National Quality Standard. They may have responsibility for supervision of volunteers or other staff.

## Duration

Full time - 104 weeks

## Work Placement Hours

360 Hours

## Mode of Study

On Campus

## Further Study Pathways

After achieving this Diploma qualification, individuals may continue their studies in an early childhood education degree at higher education. Credits and articulation pathways may apply.

## Employment Opportunities

This course may provide employment opportunities in long day care, occasional care, family day care, pre-schools and kindergartens. Job roles include:

- Children's services coordinator
- Centre manager (children's services)
- Childhood educator
- Group/team coordinator/leader (children's services)
- Children's adviser
- Program leader (children's services)

## Assessment

Assessment is both formative and summative and may include a combination of Questioning, Skills Assessment, Industry Work Placement, Scenario, Case Study, Role Play, Project, Research and Report.

## Entry Requirements

- Successful completion of Year 12 or the equivalent level of study
- Minimum English level of IELTS 5.5 or equivalent. Candidates originating from student visa assessment levels 1 and 2 without the required IELTS score can undertake Language, Literacy and Numeracy Indicator Test. For information on student visa assessment levels, refer to Department of Home Affairs (<https://www.homeaffairs.gov.au/>)
- Applicants must also be aged 18 or above

## Additional Requirements

- National Police Record Check and/or Police clearance from country of residence (home country)
- Working with Children Check
- Moderate level of computer literacy required

## Campus Available

Melbourne, Adelaide



## Units of Competency

CHCLEG001	Work legally and ethically
CHCECE001	Develop cultural competence
CHCECE002	Ensure the health and safety of children
CHCECE003	Provide care for children
CHCECE004	Promote and provide healthy food and drinks
CHCECE005	Provide care for babies and toddlers
CHCECE007	Develop positive and respectful relationships with children
CHCECE009	Use an approved learning framework to guide practice
CHCECE016	Establish and maintain a safe and healthy environment for children
CHCECE017	Foster the holistic development and wellbeing of the child in early childhood
CHCECE018	Nurture creativity in children
CHCECE019	Facilitate compliance in an education and care service
CHCECE020	Establish and implement plans for developing cooperative behaviour
CHCECE021	Implement strategies for the inclusion of all children
CHCECE022	Promote children's agency
CHCECE023	Analyse information to inform learning

CHCECE024	Design and implement the curriculum to foster children's learning and development
CHCECE025	Embed sustainable practices in service operations
CHCECE026	Work in partnership with families to provide appropriate education and care for children
CHCPRT001	Identify and respond to children and young people at risk
HLTAID004	Provide an emergency first aid response in an education and care setting
CHCPRP003	Reflect on and improve own professional practice
HLTWHS003	Maintain work health and safety
CHCDIV001	Work with diverse people
CHCDIV002	Promote Aboriginal and/or Torres Strait Islander cultural safety
CHCPOL003	Research and apply evidence to practice
CHCPOL002	Develop an implement policy
BSBLED401	Develop teams and individuals

# CHC52015 DIPLOMA OF COMMUNITY SERVICES

CRICOS Code: 090553K



This qualification reflects the roles of community services, case management and social housing workers involved in the managing, co-ordinating and/or delivering of person-centred services to individuals, groups and communities

## Duration

Full time – 104 weeks

## Work Placement Hours

400 Hours

## Mode of Study

On Campus

## Further Study Pathways

After achieving this Diploma course, students may continue their studies by enrolling in the: CHC62015 Advanced Diploma of Community Sector Management.

## Employment Opportunities

The following employment opportunities are available to students who complete this qualification:

- Welfare support worker
- Community service case worker
- Community service case manager

## Assessment

Assessment is both formative and summative and may include a combination of Questioning, Skills Assessment, Industry Work Placement, Scenario, Case Study, Role Play, Project, Research and Report.

## Entry Requirements

To ensure an appropriate learning opportunity, candidates need to demonstrate a capacity to undertake study at Diploma level, this can be demonstrated via the following:

- Successful completion of Year 12 or the equivalent level of study
- Minimum English level of IELTS 5.5 or equivalent. Candidates originating from student visa assessment levels 1 and 2 without the required IELTS score can undertake Language, Literacy and Numeracy Indicator Test. For information on student visa assessment levels, refer to Department of Home Affairs (<https://www.homeaffairs.gov.au/>)

- Applicants must also be aged 18 or above

## Additional Requirements

- National Police Record Check and/or Police clearance from country of residence (home country)
- Child - related and/or disability services and/or aged care services and /or vulnerably person related screening
- Moderate level of computer literacy required

## Campus Available

Melbourne, Adelaide



## Units of Competency

CHCCCS007	Develop and implement services programs
CHCCOM003	Develop workplace communication strategies
CHCDEV002	Analyse impacts of sociological factors on clients in community work and services
CHCDIV003	Manage and promote diversity
CHCLEG003	Manage legal and ethical compliance
CHCMGT005	Facilitate workplace debriefing and support processes
CHCPRP003	Reflect on and improve own professional practice
HLTWHS004	Manage work health and safety
CHCDEV001	Confirm client developmental status
CHCCSM005	Develop, facilitate and review all aspects of case management
CHCCCS004	Assess co-existing needs
CHCCDE011	Implement community development strategies

CHCCSL001	Establish and confirm the counselling relationship
CHCCDE007	Develop and provide community projects
CHCADV002	Provide advocacy and representation services
CHCCCS019	Recognise and respond to crisis situations



# CHC62015 ADVANCED DIPLOMA OF COMMUNITY SECTOR MANAGEMENT

CRICOS Code: 090595M



This qualification reflects the role of workers who are middle managers or managers across a range of community sector organisations. These people work independently and report to executive management, directors or boards of management. They undertake a range of functions requiring the application of knowledge and skills to achieve results in line with the organisation's goals and strategic directions.

At this level, workers have responsibility for planning and monitoring service delivery, recruitment and performance management of other paid or unpaid workers, managing risk and contributing to continuous improvement within the scope of their specific role. This may include management of a specific programs or project, or broader management of a community-based organisation, early childhood education service, not-for-profit organisation or community centre.

## Duration

Full time - 66 weeks

## Work Placement Hours

200 Hours

## Mode of Study

On Campus

## Further Study Pathways

Completion of this course provides a pathway for further study into a relevant Bachelor Degree. Examples of relevant

## Bachelor Degrees:

- Bachelor of Community Services
- Bachelor of Social Science
- Bachelor of Community Welfare

## Employment Opportunities

Graduates of this course will have employment opportunities in a range of community sector organisations e.g. aged care, early childhood services, disability services. Roles may include:

- Centre manager
- Community care manager
- Community services manager
- Program area manager
- Manager
- Coordinator

## Assessment

Assessment is both formative and summative and may include a combination of Questioning, Project, Third Party Report, Scenario, Work Placement Activities, Portfolio and Report.

## Entry Requirements

To ensure an appropriate learning opportunity, candidates need to demonstrate a capacity to undertake study at Advanced Diploma level, this can be demonstrated via the following:

- Applicants must be aged 18 or above
- Minimum English level of IELTS 5.5 or equivalent. Candidates originating from student visa assessment levels 1 and 2 without the required IELTS score can

undertake Language, Literacy, and Numeracy Indicator Test.

- For more information on student visa assessment levels, refer to the Department of Home Affairs (<https://www.homeaffairs.gov.au/>)
- Completion of Diploma of Nursing, Diploma of Community Services, Diploma of Counselling, Diploma of Early Childhood, Diploma of Project Management or Diploma of Mental Health before commencing this Advanced Diploma program, OR
  - Current work experience in a related industry supported by evidence of employment and position description

## Additional Requirements

- National Police Record Check
- Child - related and/or disability services and/or aged care services and/or vulnerably person related screening
- Moderate level of computer literacy required

## Campus Available

Melbourne, Adelaide

## Units of Competency

CHCDIV003	Manage and promote diversity
CHCLEG003	Manage legal and ethical compliance
CHCMGT001	Develop, implement and review quality framework
CHCMGT003	Lead the work team
BSBFIM601	Manage finances
BSBINN601	Lead and manage organisational change
BSBMGT608	Manage innovation and continuous improvement
BSBRISK501	Manage risk
CHCPOL003	Research and apply evidence to practice
CHCPRP003	Reflect on and improve own professional practice
CHCMGT005	Facilitate workplace debriefing and support processes
CHCPOL002	Develop and implement policy
CHCPRP004	Promote and present the service

# HEALTH

090550B	HLT37215	Certificate III in Pathology Collection
090556G	HLT52015	Diploma of Remedial Massage
092297E	HLT54115	Diploma of Nursing





# HLT37215 CERTIFICATE III IN PATHOLOGY COLLECTION

CRICOS Code: 090550B



This qualification reflects the role of pathology collectors. Workers in this role follow known routines and procedures, taking responsibility for their own work under general supervision. They combine communication, customer service and technical skills, and use discretion and judgment to adapt and transfer their skills to different situations.

## Duration

Full time - 32 weeks

## Work Placement Hours

35 Hours

## Mode of Study

On Campus

## Further Study Pathways

Completion of HLT37215 Certificate III in Pathology Collection, students may continue their studies by enrolling in the following course:

- HLT54115 Diploma of Nursing

## Employment Opportunities

The following employment opportunities are available to students who complete this qualification:

- Pathology collector

## Assessment

Assessment is both formative and summative and may include a combination of Questioning, Skills Assessment, Industry Work Placement, Scenario, Report, Project and Role Play.

## Entry Requirements

To ensure an appropriate learning opportunity, candidates need to demonstrate a capacity to undertake study at Certificate III level, this can be demonstrated via the following:

- Successful completion of Year 11 or the equivalent level of study
- Minimum English level of IELTS 5.5 or equivalent. Candidates originating from student visa assessment levels 1 and 2 without the required IELTS score can undertake Language, Literacy and Numeracy Indicator Test. For more information on student visa assessment levels, refer to Department of Home Affairs (<https://www.homeaffairs.gov.au/>)
- Applicants must also be aged 18 or above

## Additional Requirements

- National Police Record Check and/or Police clearance from country of residence (home country)
- Working with Children Check
- Immunisation records
- Moderate level of computer literacy required
- Record of vaccinations (from home country)

## Campus Available

Melbourne



## Units of Competency

CHCCOM005	Communicate and work in health or community services
CHCDIV001	Work with diverse people
HLTINF001	Comply with infection prevention and control policies and procedures
HLTPAT001	Identify and respond to clinical risks in pathology collection
HLTPAT002	Perform venous blood collections
HLTPAT004	Collect pathology specimens other than blood
HLTWHS001	Participate in work health and safety
BSBCUS201	Deliver a service to customers
BSBMED301	Interpret and apply medical terminology appropriately
HLTPAT003	Perform capillary collection
HLTAID003	Provide first aid
HLTCAR001	Perform electrocardiology (ECG)
HLTPAT006	Receive, prepare and dispatch pathology specimens
HLTAAP001	Recognise healthy body systems

# HLT52015 DIPLOMA OF REMEDIAL MASSAGE

CRICOS Code: 090556G



This qualification reflects the role of remedial massage therapists who work with clients presenting with soft tissue dysfunction, musculoskeletal imbalance or restrictions in range of motion (ROM). Practitioners may be self-employed or work within a larger health service.

## Duration

Full time - 77 weeks

## Clinical Practice

200 Hours

## Mode of Study

On Campus

## Further Study Pathways

After achieving HLT52015 Diploma of Remedial Massage, students may continue their studies by enrolling in the following course:

- HLT54115 Diploma of Nursing
- Bachelor of Health Science (Clinical Myotherapy)

## Employment Opportunities

The following employment opportunities are available to students who complete this qualification:

- Remedial Massage Therapist

## Assessment

Assessment is both formative and summative and may include a combination of Questioning, Skills Assessment, Industry Work Placement, Scenario, Role Play, Project and Report.

## Entry Requirements

To ensure an appropriate learning opportunity, candidates need to demonstrate a capacity to undertake study at Diploma level, this can be demonstrated via the following:

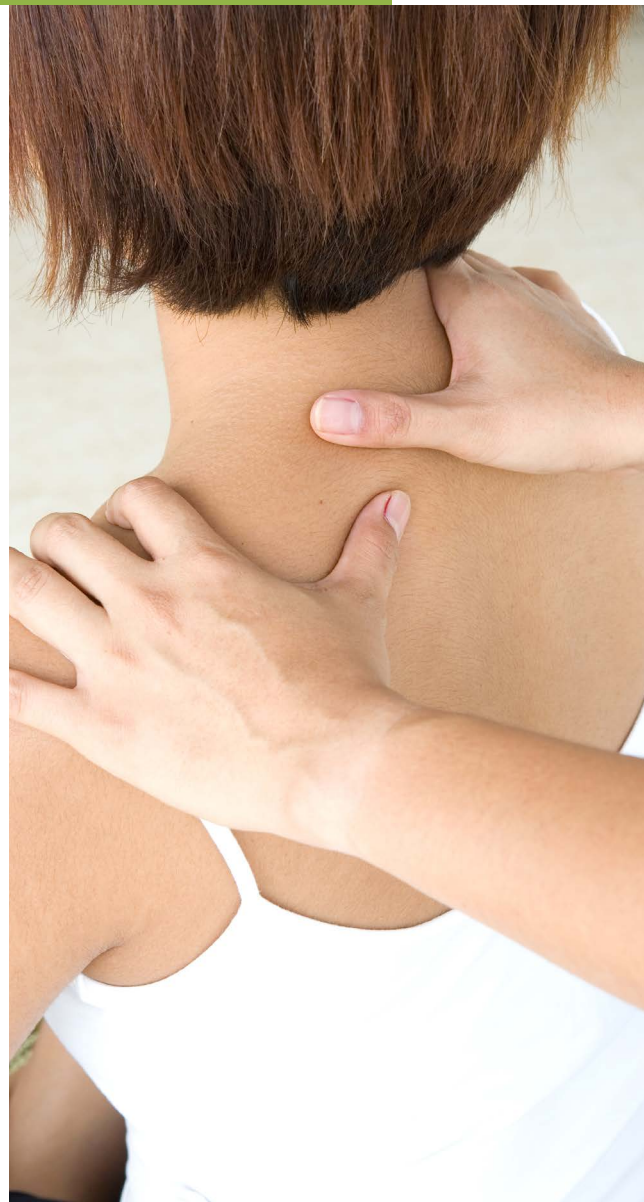
- Successful completion of Year 12 or the equivalent level of study
- Minimum English level of IELTS 5.5 or equivalent. Candidates originating from student visa assessment levels 1 and 2 without the required IELTS score can undertake Language, Literacy and Numeracy Indicator Test. For more information on student visa assessment levels, refer to Department of Home Affairs (<https://www.homeaffairs.gov.au/>)
- Applicants must also be aged 18 or above

## Additional Requirements

- National Police Record Check and/or Police clearance from country of residence (home country)
- Working with Children Check
- Moderate level of computer literacy required

## Campus Available

Melbourne



## Units of Competency

CHCCOM006	Establish and manage client relationships
CHCDIV001	Work with diverse people
CHCLEG003	Manage legal and ethical compliance
CHCPRP003	Reflect on and improve own professional practice
CHCPRP005	Engage with health professionals and the health system
HLTAAP003	Analyse and respond to client health information
HLTAID003	Provide first aid
HLTINF004	Manage the prevention and control of infection
HLTMSG001	Develop massage practice
HLTMSG002	Assess client massage needs
HLTMSG003	Perform remedial massage musculoskeletal assessments
HLTMSG004	Provide massage treatments
HLTMSG005	Provide remedial massage treatments
HLTMSG006	Adapt remedial massage practice to meet specific

HLTMSG008	Monitor and evaluate remedial massage treatments
HLTWHS004	Manage work health and safety
BSBSMB404	Undertake small business planning
HLTAAP002	Confirm physical health status
CHCCCS001	Address the needs of people with chronic disease
HLTMSG007	Adapt remedial massage practice for athletes
HLTHPS010	Interpret and use information about nutrition and diet



# HLT54115 DIPLOMA OF NURSING

CRICOS Code: 092297E



This qualification reflects the role of an enrolled nurse working under supervision of a registered nurse. This qualification covers the application of skills and knowledge required to provide nursing care for people across the health sector. A lifespan approach should underpin this qualification with relevant competencies that relate to the different stages of life identified within the units.

## Duration

Full time - 80 weeks

## Work Placement Hours

400 Hours

## Mode of Study

On Campus

## Further Study Pathways

After achieving HLT54115 Diploma of Nursing, students may continue their studies by enrolling in the following course:

- HLT64115 Advanced Diploma of Nursing
- Bachelor of Nursing (at a higher education provider or University)

## Employment Opportunities

The following employment opportunities are available to students who complete this qualification:

- Registered Enrolled Nurse

## Assessment

Assessment is both formative and summative may include a combination of: Questioning, Scenarios, Role Exams, Case studies, Projects, Practical Skills Classes and Workshops and Observation in the workplace.

## Campus Available

Melbourne, Adelaide

## Entry Requirements

To ensure an appropriate learning opportunity, prospective students would need to demonstrate a capacity to undertake study at Diploma level. This can be demonstrated via the following:

- Aged 18 years or above
- Successful completion of Year 12 or the equivalent level of study OR
- Completion of a relevant Australian Certificate III or IV qualification e.g. Aged Care, Health Services Assistance
- Meet the entry criteria set by the Australian Nursing and Midwifery Accreditation Council which states that all All students entering this course must demonstrate they have achieved the Nursing and Midwifery Board of Australia (NMBA) a specified level of English language skills, prior to commencing the course. For more information please refer to <https://www.nursingmidwiferyboard.gov.au/registration-standards/english-language-skills.aspx>

## English Language Requirements:

- English is the students primary language: supported by evidence of completion of at least six (6) years of primary and secondary education taught and assessed in English in one of the recognised countries\*, OR
- The student has achieved the required minimum scores in one of the following English language tests:
  - IELTS (academic module) with a minimum overall score of 7 and a minimum score of 7 in each of the four components (listening, reading, writing and speaking), OR
  - Evidence of OET with a minimum score of B in each of the four components (listening, reading, writing and speaking), OR
  - Evidence of PTE Academic with a minimum overall score of 65 and a minimum score of 65 in each of the four communicative skills (listening, reading, writing and speaking), OR
  - TOEFL iBT with a minimum total score of 94 and the following minimum score in each section of the test: 24 for listening, 24 for reading, 27 for writing, and 23 for speaking.

## Additional Requirements

- National Police Record Check and/or Police clearance from country of residence (home country)
- Working with Children Check
- Immunisation record
- Undertake SCEI approved Numeracy Test to Identify level of support (on arrival in Australia, prior to commencing semester 2)
- Attend an interview with the Nursing Course Coordinator and nursing trainer (on arrival in Australia)

\* Recognised country means one of the following: Australia, Canada, New Zealand, Republic of Ireland, South Africa, United Kingdom, United States of America

## Units of Competency

CHCDIV001	Work with diverse people
CHCDIV002	Promote Aboriginal and/or Torres Strait Islander cultural safety
CHCPRP003	Reflect on and improve own professional practice
HLTAAP002	Confirm physical health status
HLTAAP003	Analyse and respond to client health information
HLTENN001	Practise nursing within the Australian health care system
HLTENN002	Apply communication skills in nursing practice
HLTENN003	Perform clinical assessment and contribute to planning nursing care
HLTENN004	Implement, monitor and evaluate nursing care plans
HLTENN005	Contribute to nursing care of a person with complex needs
HLTENN006	Apply principles of wound management in the clinical environment
HLTENN007	Administer and monitor medicines and intravenous therapy
HLTENN008	Apply legal and ethical parameters to nursing practice
HLTENN009	Implement and monitor care for a person with mental health conditions

HLTENN011	Implement and monitor care for a person with acute health problems
HLTENN012	Implement and monitor care for a person with chronic health problems
HLTENN013	Implement and monitor care of the older person
HLTENN015	Apply nursing practice in the primary health care setting
HLTINF001	Comply with infection prevention and control policies and procedures
HLTWHS002	Follow safe work practices for direct client care
HLTENN025	Implement and monitor care for a person with diabetes
HLTENN010	Apply a palliative approach in nursing practice
CHCPOL003	Research and apply evidence to practice
BSBWOR404	Develop work priorities
HLTAID003	Provide First Aid



# PROJECT / PROGRAM MANAGEMENT

088817J

BSB51415

Diploma of Project Management

099619B

BSB61218

Advanced Diploma of Program  
Management





# BSB51415 DIPLOMA OF PROJECT MANAGEMENT

CRICOS Code: 088817J



This qualification reflects the role of individuals who apply project management skills and knowledge. They may manage projects in a variety of contexts, across a number of industry sectors. They have project leadership and management roles and are responsible for achieving project objectives. They possess a sound theoretical knowledge base and use a range of specialised, technical and managerial competencies to initiate, plan, execute and evaluate their own work and/or the work of others.

## Duration

Full time - 52 weeks

## Mode of Study

On Campus

## Further Study Pathways

Completion of BSB51415 Diploma of Project Management provides a pathway for further study into a relevant Advanced Diploma or Bachelor Degree. Examples of relevant Advanced Diploma's or Bachelor Degree's include:

- BSB61218 Advanced Diploma of Program Management
- Bachelor of Applied Science Project Management (Honours)
- Bachelor of Management

## Employment Opportunities

Graduates of this course will have employment opportunities in across a number of industry sectors. Roles may include:

- Project leadership
- Project manager
- Project coordinator

## Assessment

Assessment is both formative and summative and may include a combination of projects, assignments, written assessments, role plays, case studies and activities.

## Entry Requirements

To ensure an appropriate learning opportunity, candidates need to demonstrate a capacity to undertake study at Diploma level, this can be demonstrated via the following:

- Successful completion of Certificate IV in Business or equivalent
- Minimum English level of IELTS 5.5 or equivalent. Candidates originating from student visa assessment levels 1 and 2 without the required IELTS score can undertake Language, Literacy and Numeracy Indicator Test. For more information on student visa assessment levels, refer to Department of Home Affairs (<https://www.homeaffairs.gov.au/>)
- Participants must also be aged 18 or above

## Additional Requirements

- Moderate level of computer literacy required

## Campus Available

Melbourne, Adelaide



## Units of Competency

BSBPMG511	Manage project scope
BSBPMG512	Manage project time
BSBPMG513	Manage project quality
BSBPMG514	Manage project cost
BSBPMG515	Manage project human resources
BSBPMG516	Manage project information and communication
BSBPMG517	Manage project risk
BSBPMG521	Manage project integration
BSBHRM513	Manage workforce planning
BSBMGT516	Facilitate continuous improvement
BSBWOR502	Lead and manage team effectiveness
BSBWOR501	Manage personal work priorities and professional development

# BSB61218 ADVANCED DIPLOMA OF PROGRAM MANAGEMENT

CRICOS Code: 099619B



This qualification reflects the role of individuals who apply specialised knowledge and skills, together with experience in program management across a range of enterprise and industry contexts. It applies to individuals who are program managers, managing or directing a suite of projects (a program) to achieve organisational objectives.

## Duration

Full time - 52 weeks

## Mode of Study

On Campus

## Further Study Pathways

Completion of BSB61218 Advanced Diploma of Program Management provides a pathway for further study into a relevant Bachelor Degree. Examples of relevant Advanced Diploma's or Bachelor Degree's include:

- Bachelor of applied science Project Management (Honours)
- Bachelor of Management

## Employment Opportunities

Graduates of this course will have employment opportunities in across a number of industry sectors. Roles may include:

- Project leadership
- Project manager
- Project coordinator

## Assessment

Assessment is both formative and summative and may include a combination of projects, assignments, written assessments, role plays, case studies and activities.

## Entry Requirements

Entry to this qualification is limited to those who:

- Have completed a Diploma of Project Management qualification, or
- Have completed two years equivalent full-time relevant workplace experience at a significant level within a project or program environment within an enterprise.
- Participants must also be aged 18 or above
- Minimum English level of IELTS 5.5 or equivalent. Candidates originating from student visa assessment levels 1 and 2 without the required IELTS score can undertake Language, Literacy and Numeracy Indicator Test. For information on student visa assessment levels, refer to Department of Home Affairs (<https://www.homeaffairs.gov.au/>)

## Additional Requirements

- Moderate level of computer literacy required

## Campus Available

Melbourne, Adelaide



## Units of Competency

BSBPMG610	Enable program execution
BSBPMG621	Facilitate stakeholder engagement
BSBPMG622	Implement program governance
BSBPMG623	Manage benefits
BSBFIM601	Manage finances
BSBHRM602	Manage humanresources strategic planning
BSBINN601	Lead and manage organisational change
BSBPMG615	Manage program delivery
BSBPMG616	Manage program risk
BSBPMG617	Provide leadership for the program
BSBMGT520	Plan and manage the flexible workforce
BSBMGT615	Contribute to organisation development





# INFORMATION TECHNOLOGY

0101579	ICT50118	Diploma of Information Technology
086730K	ICT60115	Advanced Diploma of Information Technology



# ICT50118 DIPLOMA OF INFORMATION TECHNOLOGY

CRICOS Code: 0101579



This qualification provides the skills and knowledge for an individual to administer and manage information and communications technology (ICT) support in small-to-medium enterprises (SMEs) using a wide range of general ICT technologies.

Persons working at this level provide a broader rather than specialised ICT support function, applying a wide range of higher level technical skills in ICT areas such as networking, IT support, database development, programming and web development.

## Duration

Full time - 49 weeks

## Mode of Study

On Campus

## Further Study Pathways

After achieving this Diploma course, individuals may continue their studies in ICT60115 Advanced Diploma of Information Technology.

## Employment Opportunities

Occupational titles for these workers may include:

- Computer technician
- Customer IT support
- Information systems operator
- Systems administrator
- Systems support technician
- Network operations technician

## Assessment

Assessment is both formative and summative and may include a combination of questioning, projects, practical tasks and case studies.

## Entry Requirements

- Successful completion of Year 12 or the equivalent level of study
- Minimum English level of IELTS 5.5 or equivalent. Candidates originating from student visa assessment levels 1 and 2 without the required IELTS score can undertake Language, Literacy and Numeracy Indicator Test. For more information on student visa assessment levels, refer to Department of Home Affairs (<https://www.homeaffairs.gov.au/>)
- Participants must also be aged 18 or above

## Additional Requirements

- Moderate level of computer literacy required

## Campus Available

Melbourne



## Units of Competency

<b>BSBWHS501</b>	Ensure a safe workplace
<b>BSBSUS501</b>	Develop workplace policy and procedures for sustainability
<b>ICTICT509</b>	Gather data to identify business requirements
<b>ICTICT517</b>	Match ICT needs with the strategic direction of the organisation
<b>ICTPRG525</b>	Build Java Applets
<b>ICTPRG528</b>	Perform ICT data conversion
<b>ICTICT507</b>	Select new technology models for business
<b>ICTSAS506</b>	Update ICT system operational procedures
<b>ICTICT506</b>	Implement process re-engineering strategies
<b>ICTSAS504</b>	Develop and conduct client acceptance test
<b>ICTICT501</b>	Research and review hardware technology options for organisations
<b>ICTWEB502</b>	Create dynamic web pages
<b>ICTWEB510</b>	Analyse information and assign Meta tags

<b>ICTWEB429</b>	Create a mark-up language document to specification
<b>ICTWEB508</b>	Develop website information architecture
<b>ICASAS417</b>	Undertake ICT system capacity planning
<b>ICTWEB424</b>	Evaluate and select a web hosting service
<b>ICTDBS502</b>	Design a database
<b>ICTDBS415</b>	Build a database
<b>ICTICT505</b>	Determine acceptable developers for projects



# ICT60115 ADVANCED DIPLOMA OF INFORMATION TECHNOLOGY

CRICOS Code: 086730K



This qualification provides high level information and communications technology (ICT), process improvement and business skills and knowledge to enable an individual to be effective in senior ICT roles within organisations. The qualification builds on a base core of management competencies, with specialist and general elective choices to suit particular ICT and business needs, especially in the areas of knowledge management and systems development.

## Duration

Full time - 49 weeks

## Mode of Study

On Campus

## Further Study Pathways

After achieving this Advanced Diploma course the individuals may continue their studies in Bachelor Degree course such as Information Technology or Business Information Systems at a higher education provider. Individuals may be eligible for credit into a bachelor degree. For further information contact individual universities.

## Employment Opportunities

This course may provide employment opportunities as an IT specialist in the ICT Industry. Relevant job titles include:

- Database systems administrator
- Software developer/programmer

- Knowledge manager
- ICT infrastructure manager
- Business development manager
- Software manager

## Assessment

Assessment is both formative and summative and may include a combination of presentations, reports, projects, questioning, case studies and demonstrations.

## Entry Requirements

- Successful completion of Certificate IV in IT or above
- Minimum English level of IELTS 5.5 or equivalent. Candidates originating from student visa assessment levels 1 and 2 without the required IELTS score can undertake Language, Literacy and Numeracy Indicator Test. For more information on student visa assessment levels, refer to Department of Home Affairs (<https://www.homeaffairs.gov.au/>)
- Participants must also be aged 18 or above

## Additional Requirements

- Moderate level of computer literacy required

## Campus Available

Melbourne



## Units of Competency

<b>BSBWOR502</b>	Ensure team effectiveness
<b>ICTICT608</b>	Interact with clients on a business level
<b>ICTICT610</b>	Manage copyright, ethics and privacy in an ICT environment
<b>ICTPMG609</b>	Plan and direct complex ICT projects
<b>ICTSUS601</b>	Integrate sustainability in ICT planning and design projects
<b>ICTICT508</b>	Evaluate vendor products and equipment
<b>ICTICT602</b>	Develop contracts and manage contracted performance
<b>ICTSAS601</b>	Implement change management processes
<b>ICTSAD505</b>	Develop technical requirements for business solutions
<b>ICTSAD504</b>	Implement quality assurance processes for business solutions
<b>ICTDBS501</b>	Monitor and improve knowledge - management system
<b>ICTDBS601</b>	Build a data warehouse
<b>BSBMGT608</b>	Manage innovation and continuous improvement

<b>ICTSAS504</b>	Develop and conduct client acceptance test
<b>ICTDBS504</b>	Integrate database with a website
<b>ICTICT501</b>	Research and review hardware technology options for organisations





**SCEI** ★ ★ ★ ★ ★  
SOUTHERN CROSS  
EDUCATION INSTITUTE

## SOUTHERN CROSS EDUCATION INSTITUTE PTY LTD

### MELBOURNE CAMPUSES

155-161 Boundary Road, North Melbourne VIC 3051  
41 Boundary Road, North Melbourne VIC 3051  
52-58 Chetwynd Street, West Melbourne VIC 3003  
T +61 3 9602 4110

### ADELAIDE CAMPUS

14 - 16 Grote Street, Adelaide SA 5000  
T +61 8 8212 8745

### CONNECT WITH US

- Facebook icon SCEIau
- Twitter icon SCEI\_AUS
- Instagram icon SCEI

E [info@scei.edu.au](mailto:info@scei.edu.au), [enroll@scei.edu.au](mailto:enroll@scei.edu.au)

CRICOS No: 02934D  
RTO No: 121952

[www.scei.edu.au](http://www.scei.edu.au)