

# HLT52015 DIPLOMA OF REMEDIAL MASSAGE



This qualification reflects the role of remedial massage therapists who work with clients presenting with soft tissue dysfunction, musculoskeletal imbalance or restrictions in range of motion (ROM). Practitioners may be self-employed or work within a larger health service.

### Duration

Full time - 77 weeks

### Clinical Practice

200 Hours

### Mode of Study

On Campus

### Further Study Pathways

After achieving HLT52015 Diploma of Remedial Massage, students may continue their studies by enrolling in the following course:

- HLT54115 Diploma of Nursing
- Bachelor of Health Science (Clinical Myotherapy)

### Employment Opportunities

The following employment opportunities are available to students who complete this qualification:

- Remedial Massage Therapist

### Assessment

Assessment is both formative and summative and may include a combination of Questioning, Skills Assessment, Industry Work Placement, Scenario, Role Play, Project and Report.

### Entry Requirements

To ensure this course is an appropriate learning opportunity, individuals would need to demonstrate a capacity to undertake study at the Diploma level, this can be demonstrated via the following:

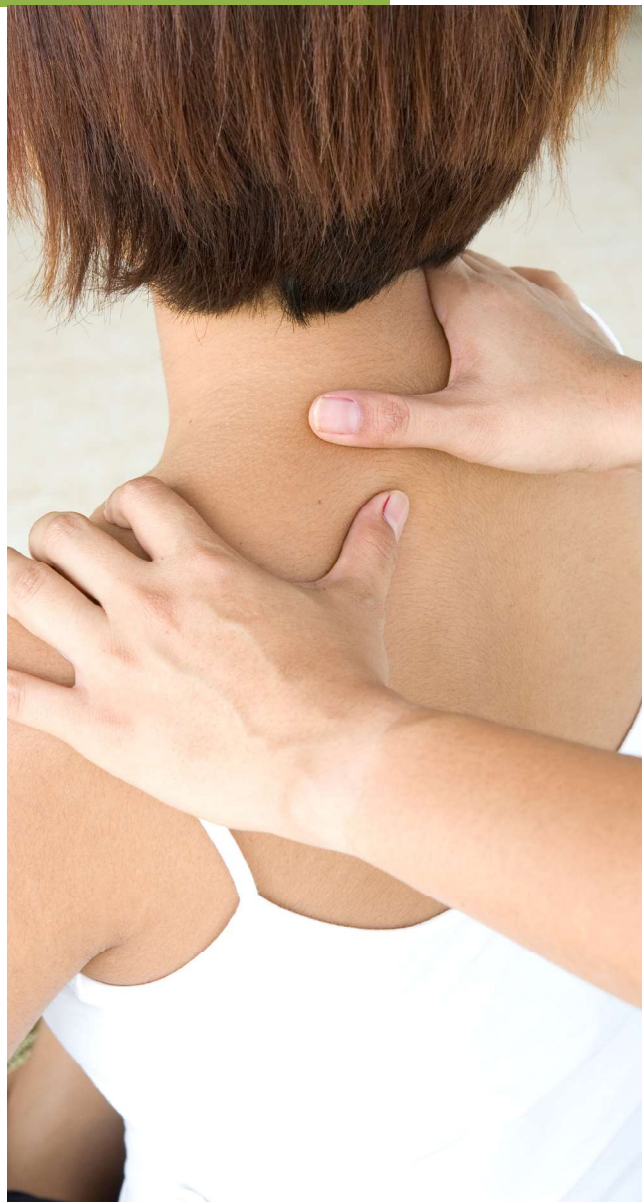
- Candidates must be aged 18 or above
- Successful completion of Year 12 or the equivalent level of study or mature aged entry
- Successful completion of SCEI's Language, Literacy and Numeracy Indicator Test

### Additional Requirements

- National Police Record Check and/or Police clearance.
- Working with Children Check
- Moderate level of computer literacy required

### Campus Available

Melbourne



## Units of Competency

CHCCOM006	Establish and manage client relationships
CHCDIV001	Work with diverse people
CHCLEG003	Manage legal and ethical compliance
CHCPRP003	Reflect on and improve own professional practice
CHCPRP005	Engage with health professionals and the health system
HLTAAP003	Analyse and respond to client health information
HLTAID003	Provide first aid
HLTINF004	Manage the prevention and control of infection
HLTMSG001	Develop massage practice
HLTMSG002	Assess client massage needs
HLTMSG003	Perform remedial massage musculoskeletal assessments
HLTMSG004	Provide massage treatments
HLTMSG005	Provide remedial massage treatments
HLTMSG006	Adapt remedial massage practice to meet specific

HLTMSG008	Monitor and evaluate remedial massage treatments
HLTWHS004	Manage work health and safety
BSBSMB404	Undertake small business planning
HLTAAP002	Confirm physical health status
CHCCCS001	Address the needs of people with chronic disease
HLTMSG007	Adapt remedial massage practice for athletes
HLTHPS010	Interpret and use information about nutrition and diet